



LIGHT  
SCALE

CHARCOAL

# 10 LIGHT SCALE UP TO

THE NEW CHARCOAL BLEACH PASTE  
WITH **LIGHTENING POWER UP TO 10** LEVELS CREATING  
THE **PERFECT BLONDE** LEAVING HAIR HEALTHY AND  
HYDRATED



500 g Sachet

## UP TO 10 LEVELS LIGHTER

### #CHEWOW:

The wow effect of the dark charcoal bleach paste  
vs the absolute blonde results.

Progressive processing time up to 90 minutes.

Can be used with a heat source to accelerate  
processing time.

Suitable for all techniques\*.

\* Closed in foil strips or transparent sheets: no swelling or leaking;  
hair stays hydrated. Free-hand: no solidifying or drying when  
left uncovered

LIGHT  
SCALE



L'Oréal  
PARIS  
MILANO

education



**Charcoal Sugar Complex**, a **dual-action** complex of sugars and charcoal.

The **sugars** work on the surface, in the cuticle, **protecting and hydrating the hair throughout the lightening process.**

The **Charcoal**, not only gives the bleaching paste its characteristic black color, it also **neutralises unwanted yellow/orange undertones whilst purifying the hair.**

The combination of the **Charcoal Sugar Complex** and the **Blend of Natural Oils** makes the **formula gentler, leaving hair visibly healthy.**

This **progressive lightening formula** allows processing up to **90 minutes** exceeding the standard maximum processing time of normal bleaches.

# CHARCOAL

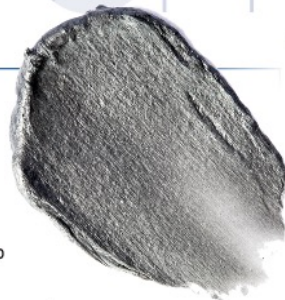
 CHARCOAL SUGAR COMPLEX

It is widely used in skin care, but the properties of this totally **eco-friendly** active ingredient are also perfect for hair care.

Charcoal is a highly porous, odourless and tasteless powder, obtained by burning wood or the shells or stones of fruit.

Its purifying, cleansing, anti-smog and detoxifying properties make it highly versatile and effective in cosmetics.

The same active ingredient is used for whitening teeth and used in many whitening toothpastes.



## LIGHTENING PROCESS

**1** \_\_\_\_\_  
Massage the sachet every time you use the **product to activate the blend of nourishing oils inside it.**

**3** \_\_\_\_\_  
Use in a **dilution ratio of 1:1.5/ 1:2 with 10-20-30 volume developer** based on the fluidity desired and the result you want to achieve.

**2** \_\_\_\_\_  
Leave-in time **60-90 minutes. After 40/45 minutes, check the lightening level achieved by rinsing a strand of hair.**

**4** \_\_\_\_\_  
If you need to achieve a higher degree of lightening, add a **second application without rinsing the product off.**



### 5 - TO COMPLETE THE SERVICE

Once the leave-in time has finished, massage with a little water and rinse.

Wash thoroughly with a specific shampoo (**Top Care Color After Color Care Acid Shampoo**) to eliminate any residual traces of oil.

### 6 - TECHNICAL TIPS

Do not apply the product on ultra-bleached tips to avoid the appearance of grey/iridescent light blue highlights. To prevent the bleaching paste from coming into contact with the tips, we recommend using **Lisaplex™ Hair Structure Filler (\*)**.

(\*) Lisaplex™ recommends carrying out an accurate diagnosis before any colour removing service and not to use Lisaplex™ if a colour removing service has not been carried out without Lisaplex™.

SUGAR



LIGHT SCALE  
UP TO

BLEACH POWDER WITH  
THE LIGHTENING POWER UP TO 9 LEVELS  
FOR THE PERFECT BLONDE

LIGHT  
SCALE



500 g Tin

**UP TO 9 LEVELS LIGHTER**

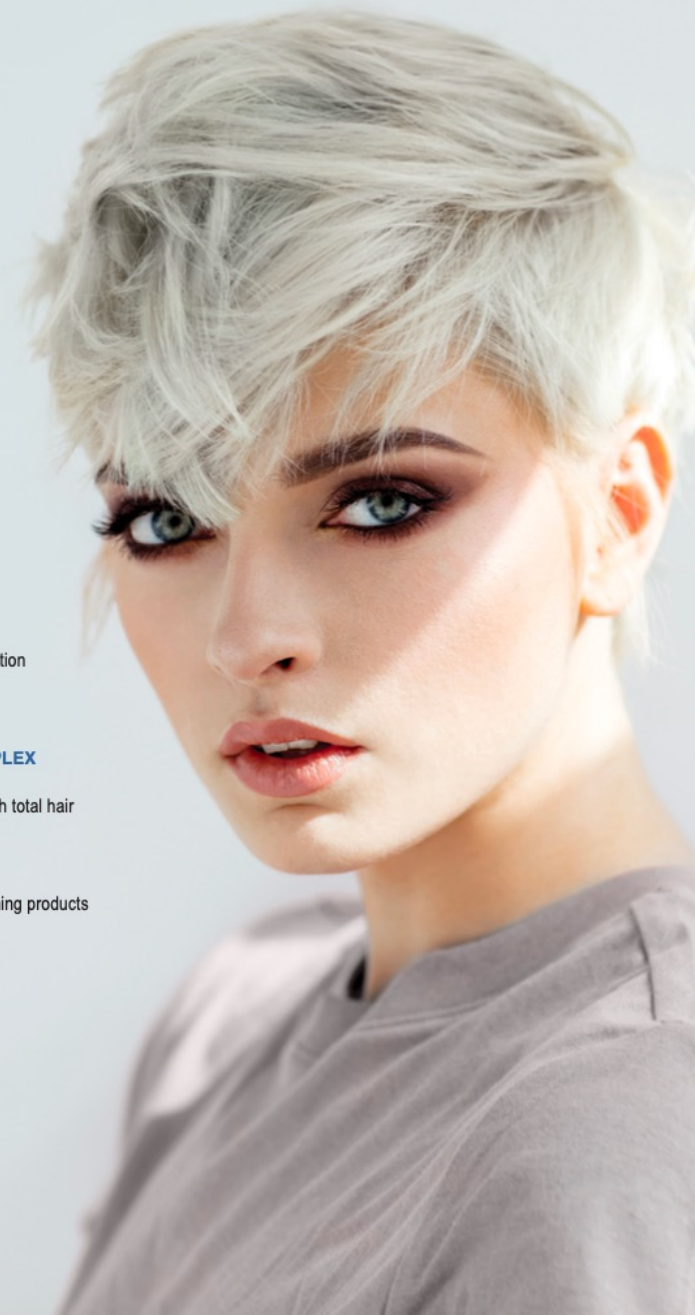
White bleach powder, easier detection  
of the tones achieved.

**AMMINOSUGAR CARE COMPLEX**

To boost the lightening process with total hair  
protection.

Acts faster than the average bleaching products  
on the market.

Suitable for all techniques.



**Amino Sugar Care Complex**, a dual-action complex of sugars, amino acids, cysteine and glycine.

The sugar work on the surface, in the cuticle, **to maintain hydration and nourish damaged hair.**

The **amino acids** penetrate into the hair structure preserving the **damaged keratin structure.**

**Cysteine and Glycine (\*)** act inside the keratin bonds to **reinforce the hair and boost the lightening process** for an even better result.

**Hair is protected, restructured, reinforced and lightened without damage.**

\*Present as derivatives in the product.

**PROTECTION AND NUTRITION**

**Cysteine** and  
**Glycine**

work within the keratin bonds and capillary structures, strengthening the hair, promoting the lightening process and leaving the hair healthy.



**LIGHTENING PROCESS**

**1** \_\_\_\_\_

For a safe lightening service, mix **30 g of Light Scale Up-To-9 + 45/60 ml of Developer 10/20/30 Vol.**

**3** \_\_\_\_\_

Once mixed, add **5 ml of Lisaplex™ Bond Saver (\*)** to preserve the integrity of the hair's lamellar structure. We recommend a dilution ratio of **1:1.5 or 1:2.**

**2** \_\_\_\_\_

The choice of quantity (**1:1.5 or 1:2**) and the developer volume (10/20/30) depends on the desired texture and target lightening level.

**4** \_\_\_\_\_

The **leave-in time** depends on the desired result of the lightening, for a maximum of **60 minutes.**



**5 - TO COMPLETE THE SERVICE**

Wash thoroughly with a specific shampoo (**Top Care Color After Care Color Acid Shampoo**) to avoid reactivating the bleaching process. To complete the service, apply 20 ml of **Lisaplex™ Hair Structure Filler\*** depending on the hair structure..

**6 - TECHNICAL TIPS**

Before bleaching, spray the hair with **Lisap Absolute Spray** to rebalance the porosity of the hair and hydrate it without masking the lightening process.

(\*) Lisaplex™ recommends carrying out an accurate diagnosis before any colour removing service and not to use Lisaplex™ if a colour removing service has not been carried out without Lisaplex™.



# LIGHT SCALE



m&u imports



muiimports\_au

**m&u** imports  
Hairdressing and Beauty Supplies

(03) 9555 1533 | sales@muiimports.com.au | www.muiimports.com.au | 662 South Rd, Moorabbin Victoria 3189 Australia

